

Installing the Portable Design application

Install Dongle driver

This must be installed the first installation.

- Left click on the **Install Dongledriver**.
- Follow the instructions on the screen.
- Now you may insert the dongle.



Install Portable Design.

- Start the installation by left click on **Install Portable Design English**.
- Follow the instructions on the screen.
- This will install the complete Portable Design application.



Change Language

- Left click on **Change Language Menu**.
- A new window will appear showing the language options.
- Left click on the language of your choice.
- Follow the instructions on the screen.
- Left click on **Back**.



The **Portable Display** by expolinc, now is ready to use.

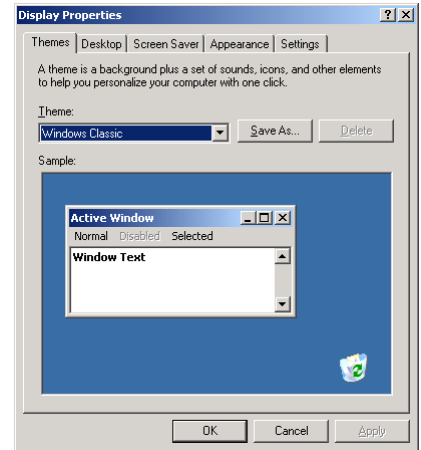
If you not already have the **QuickTime** and **Acrobat Reader** installed, you are free to do the installation from the Portable Design installation CD.

Running Portable Design with Windows XP

Portable Design works well on Windows XP with the following settings.

Disable the Themes.

- Right click on an empty space on the **windows desktop**.
- A drop down list will appear, left click on **Properties** in this list.
- The **Display Properties** window will now appear.
- The **Themes** tab should already be highlighted, if it is not then left click on this tab.
- There is a drop down list in this dialog under the heading of **Theme**.
- Left click on the **down arrow** to display the available options.
- From this list pick **Windows Classic**.
- Once this has been picked, left click on **Apply**, then left click **OK**.
- The **Display Properties** window will close, and you will be returned to the desktop.



Change the handling of Virtual memory:

- Right click on the symbol **My computer**.
- A drop down list will appear, left click on **Properties** in this list.
- Left click on the tab **Advanced** in the window **System properties**.
- Left click on **Settings** under the heading **Performance**.
- Left click on **Advanced** under the heading **Performance options**.
- Left click on **Change** under the heading **Virtual memory**.
- Left click on the button **System managed size**.
- Left click on **Set** and then **OK**.
- Restart the computer

