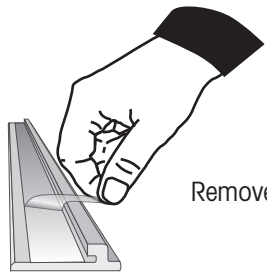


MANUAL



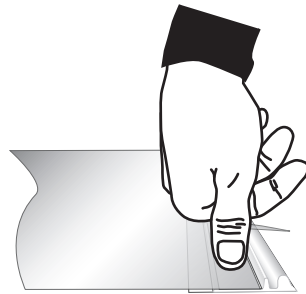
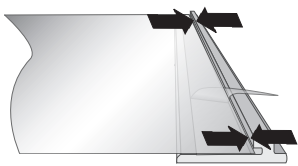
Graphic No: 10586

1

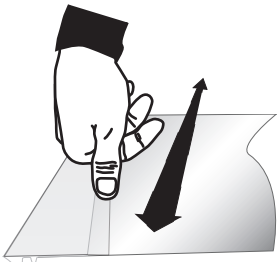


Remove a small part of the protective liner on the fronttape.

Adjust the image towards the strip.



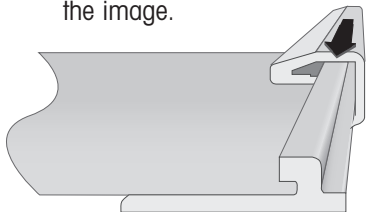
Fix the panelstrip onto the image.



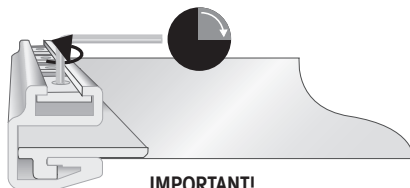
Remove the remaining part of the protective liner.

Press the image firmly onto the panelstrip.

Slide on the top profile onto the image.



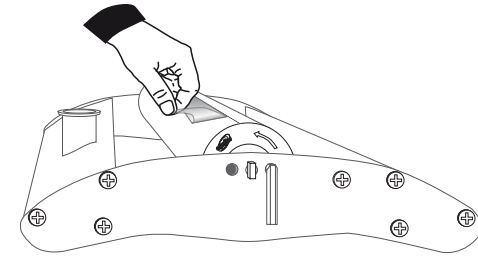
Turn the image around and tighten the screws.



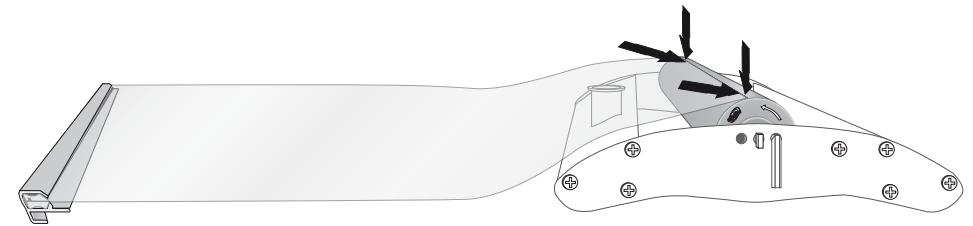
IMPORTANT!

- Tighten the screw until you meet resistance.
- Tighten further max a quarter of a turn.

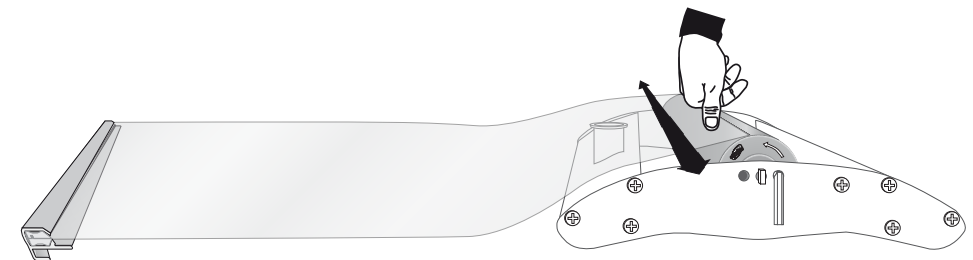
2



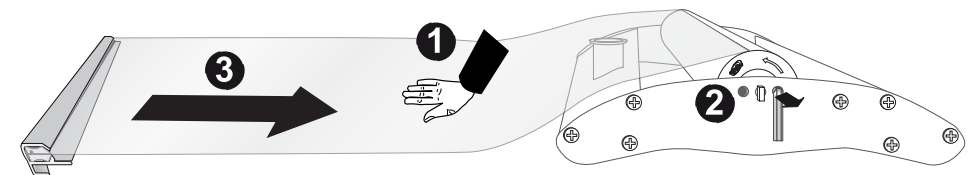
Remove a small part of the protective liner of the tape on the roller.



Adjust the panel along the track of the roller and fix.



Remove the remaining part of the protective liner and press the panel firmly onto the roller.



Stop the panel with one hand when pulling out the locking key.
Let the panel slowly roll onto the roller.